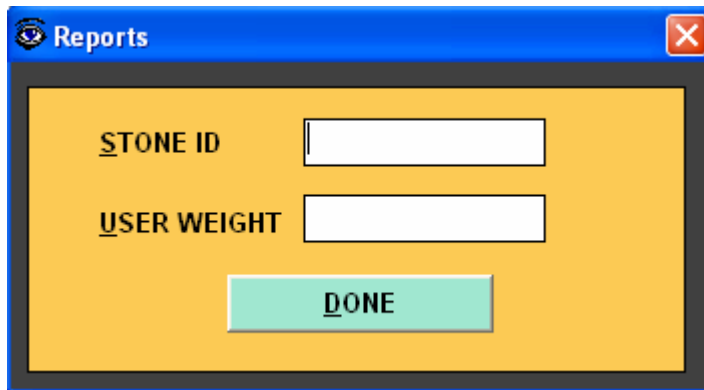


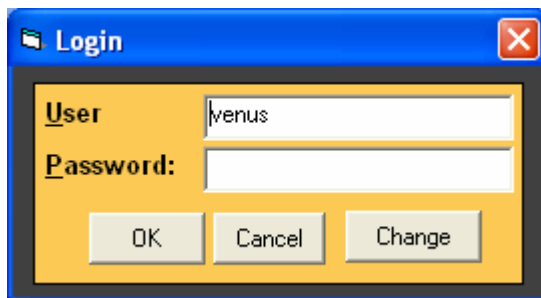
Operating Manual for StoneID

- 1) Extract all file from zip to c:\Maya\HeliumLexus\Report folder.
- 2) Choose Stoneid option from Export Report Data option
- 3) Now enter your stone id and user weight and click on DONE button.



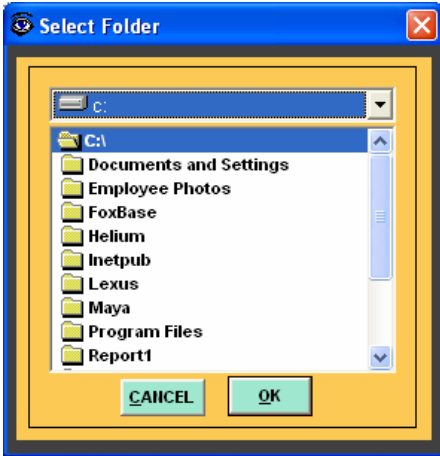
The screenshot shows a dialog box titled "Reports" with a blue header and a yellow background. It contains two input fields: "STONE ID" and "USER WEIGHT", both with empty text boxes. Below the fields is a green button labeled "DONE".

- 4) If you want to change to location for exporting data(stonid.txt file will be generated)
- 5) When above form will displayed, then press * to change path for exporting data.(below form will display)



The screenshot shows a dialog box titled "Login" with a blue header and a yellow background. It contains two input fields: "User" with the text "yenus" and "Password:" which is currently blank. Below the fields are three buttons: "OK", "Cancel", and "Change".

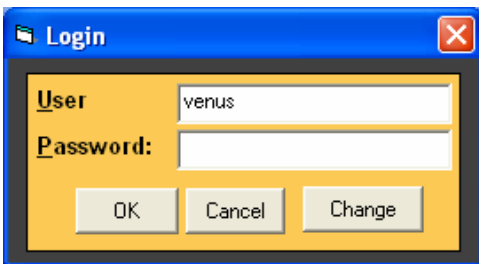
- 6) Now Enter password (default password is blank) and click on OK button.



- 7) Now choose your path, where you want to stored all the exported data file (name as stoneid)
- 8) Click on Ok button
- 9) Now again enter Stoneid and user weight and click on DONE button.

Change Password

- 1) If you want to change password then click on change button of Login form as show above.



- 2) Now Enter Old password and new password to change your password.
- 3) Click on Button to changed



Note:-

There is Standard.txt file given in same zip (or folder).

You can enter your Parameter, which you want to export.

So your new txt file will get generated only with those data which you enter on that standard.txt file.